

# Year 8

## Science Homework Booklet

### Autumn One

Complete all the tasks to the best of your ability.  
Loss of this booklet will result in a 60 minute referral.

Task Set	Due Date
1- Research	
2- Extended Writing	
3- Exam Questions	
4- Science in the News	

Student Name:

Form Group:

Science Set:

Science Teacher:







---

---

---

---

---

---

---

---

---

---

---




---

---

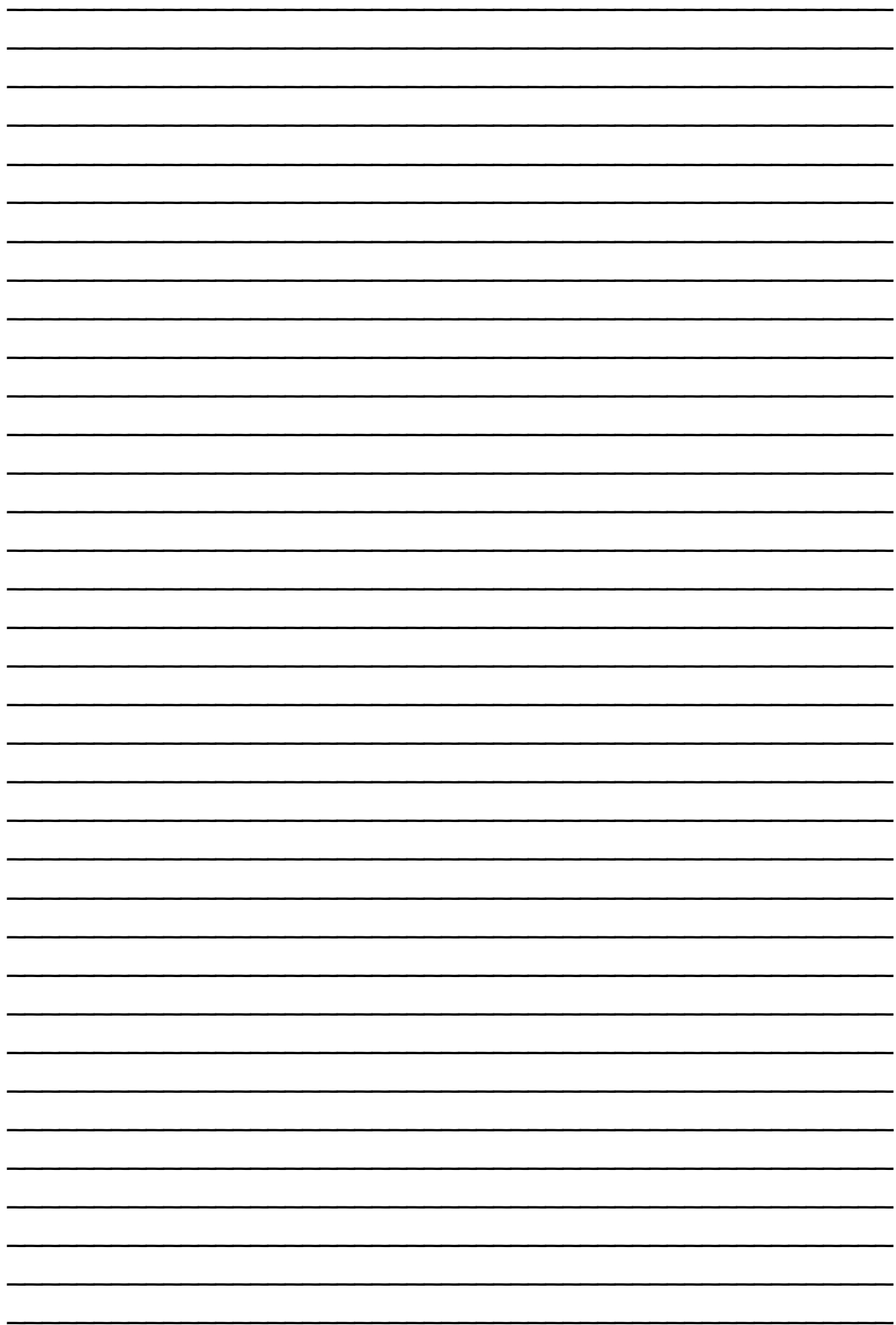
---

---

---

<b>Self Assessment</b>						
Signed:						
 						
						
<b>Literacy:</b>	<b>SP</b>	<b>P</b>	<b>EXP</b>	<b>PL</b>	<b>T</b>	<b>^ C //</b>





---

---

---

---

---

---

---

---

---

---

---

---

---

---

---

---

---

---

---

---

---

---

---

---

# Self Assessment

Signed: \_\_\_\_\_



Literacy: SP

P

EXP

PL T

Λ C

//



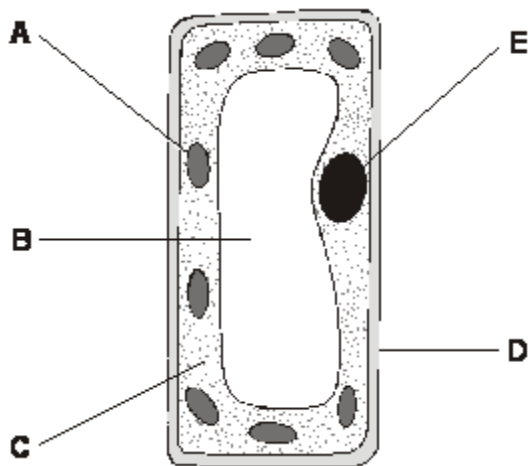
# Task Three- Exam Questions

Answer the exam questions which link to the topic you have been learning about:

**Remember your exam technique:**

- Highlight any key words in the question.
- Look how many marks the question is worth.
- How many marks = how many correct points you need to make.
- How many marks= roughly how many minutes you should be spending on that question
- Answer the question THEN double check- have you definitely done what the question has asked you to do?

Q1. The diagram shows a plant cell.



(a) Give the name of part A.

.....

Give the function of part A.

.....

.....

2 marks

(b) Give the name of part E.

.....

Give the function of part E.

.....

.....

2 marks

c) i) Write the word equation for photosynthesis.

..... + .....  $\longrightarrow$  ..... +

..... + .....

4 marks

ii) Write the balanced symbol equation for photosynthesis

..... + .....  $\longrightarrow$  ..... +

.....

4 marks

**Q2. (a)** Plants have leaves which contain guard cells and palisade cells. Explain how **each** of these kinds of cell assists photosynthesis.

**Guard cells**

.....

.....

.....

.....

**(2)**

**Palisade cells**

.....

.....

.....

.....

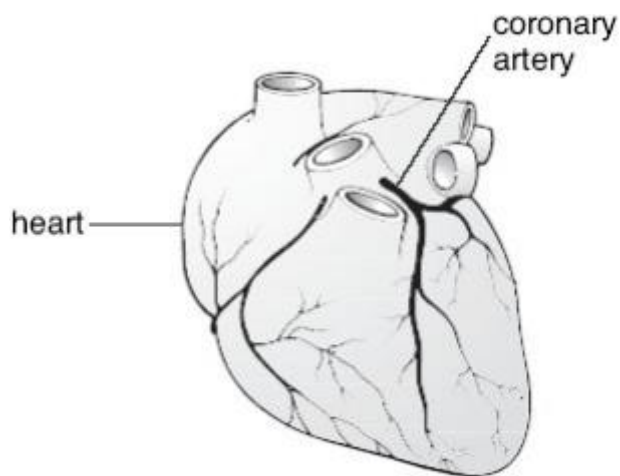
**(2)**

**Total 4 marks)**

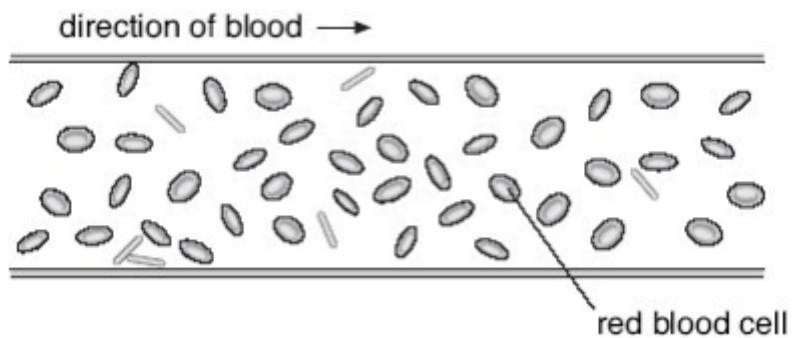
**Q3.** Complete the table below to compare aerobic and anaerobic respiration.

	<b>Aerobic</b>	<b>Anaerobic</b>
Amount of energy released		
Products		
Reactants		

The coronary arteries carry blood to the heart muscle.  
The drawing below shows the heart and coronary arteries.

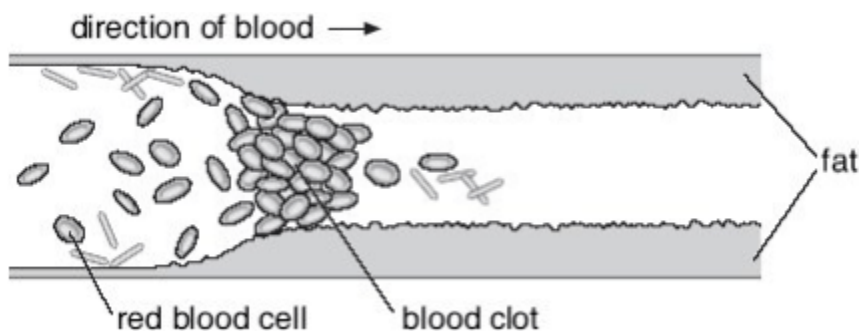


(i) Diagram 1 shows a section through a coronary artery.



**diagram 1**

Smoking can cause damage to the coronary artery.  
Diagram 2 shows a section through part of a damaged artery.



**diagram 2**

*not to scale*

Look at diagram 2. A blood clot has formed.

Give **one** other change in the coronary artery.

.....  
.....

1 mark

(ii) Respiration takes place in the muscle cells of the heart.

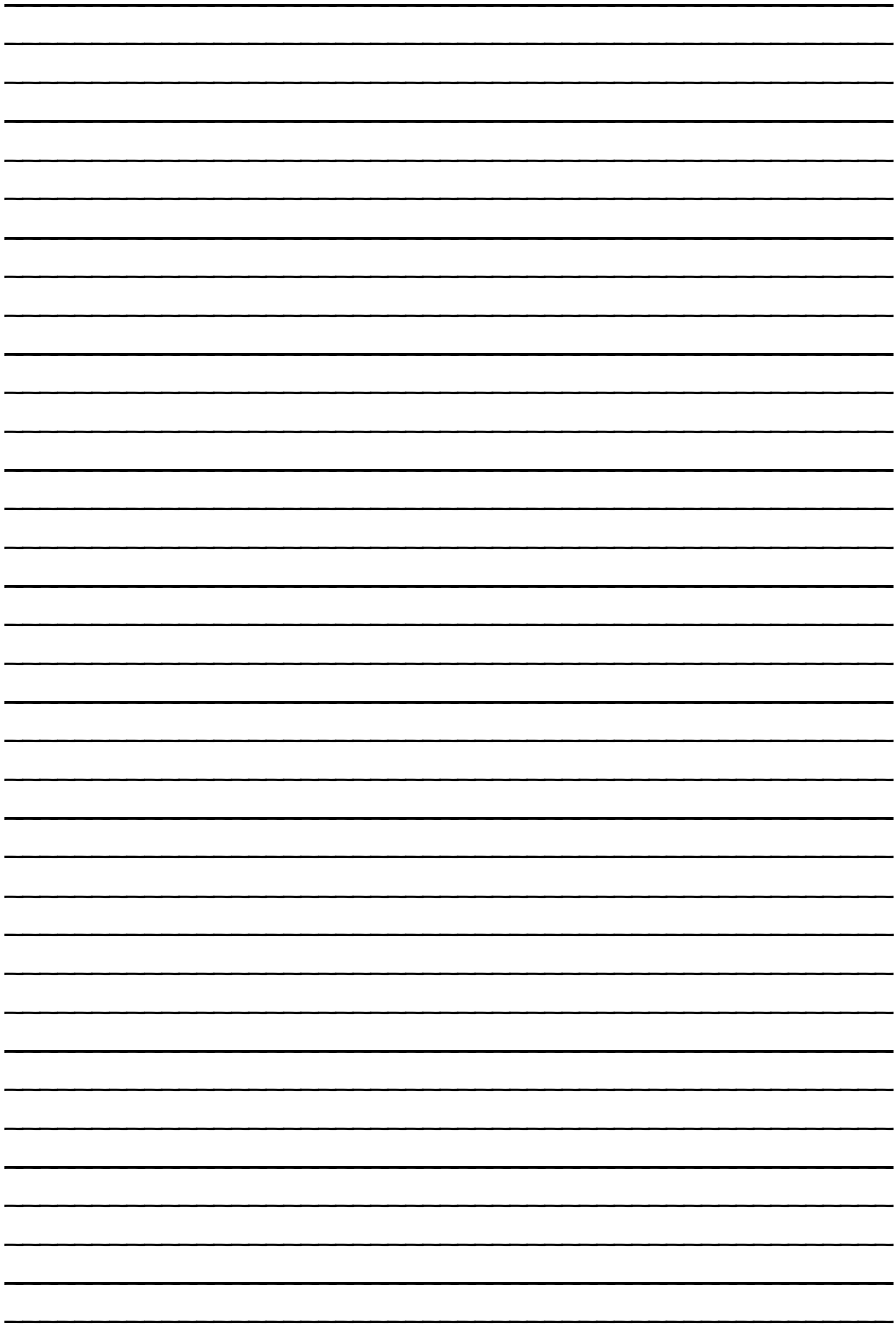
Explain why a blood clot in the coronary artery prevents these cells respiring normally.

.....  
.....  
.....  
.....

2 marks

maximum 6 marks





---

---

---

---

---

---

---

---

---

---

---

---

---

---

---

---

---

---

---

---

---

---

---

---

**Review of Autumn One Homework Booklet**

## Peer Assessment

Signed: \_\_\_\_\_

A yellow star with a simple smiley face and a long, thin tail, resembling a shooting star.

A yellow star with a simple smiley face and a long, thin tail, resembling a shooting star.

A black magic wand with a red star at the tip and several colorful stars (red, yellow, green, blue) floating around it.

---

---

**Literacy: SP P EXP PL T ^ C //**



**How has this homework booklet helped you in Science?**

**How could this booklet be improved for next half term to help you further in Science?**

**Teacher comments**

